

ANGIER ELEMENTARY SCHOOL PROJECT



Waban Neighborhood Area Council Angier Project Update

Thursday, July 10, 2014 at 7:00 PM - Waban Library

Tree removal along the MBTA property line was completed on 6/16. Salvageable materials were removed/stored. Mobilization, site prep and abatement began on 6/30. Site preparation including a temporary side walk, ramp and emergency access way is underway. Remaining trees on site were removed. Site trailers are arriving. Temporary fence installation is ongoing to be followed by erosion and sedimentation control barriers. Protection work has been done at the stained glass windows at the adjacent Church. Towards the end of July coordination will commence w/the MBTA re: retaining wall excavation.



Construction Schedule at a Glance

June 8, 2014 - June 20, 2014	Tree Removal
June 26, 2014 - July 7, 2014	On Site Mobilization
July 2014 - September 2014	Site Preparation Building Abatement Building Demolition
Fall 2014 - Spring 2015	Site Work Foundations Exterior Shell Erect Structural Steel
Spring - Fall 2015	Off Site Improvements Landscaping
Fall 2015 - Winter 2016	Interior Fit Out Furnishings Technology
February 1, 2016	Substantial Completion
February Vacation 2016	Building Move-In

Upcoming Update Meetings

- 08/14/14 TBD *Update meetings will be held the 2nd*
- 09/11/14 *Thursday of each month at 7:00 PM for*
- 10/09/14 *the duration of the Project.*

Contacts

For general
project inquiries:

Alex Valcarce
City of Newton
Project Manager
(617) 796-1600

For after hours
emergencies:

W.T. Rich Company
(617) 467-6010

Project Consultant Team

Joslin, Lesser + Associates - Owner's Project Manager
DiNisco Design Partnership - Architect
W. T. Rich Company - Construction Project Manager
Fitzmeyer & Tocci Associates - Commissioning Agent

For more information on the Project, please visit:

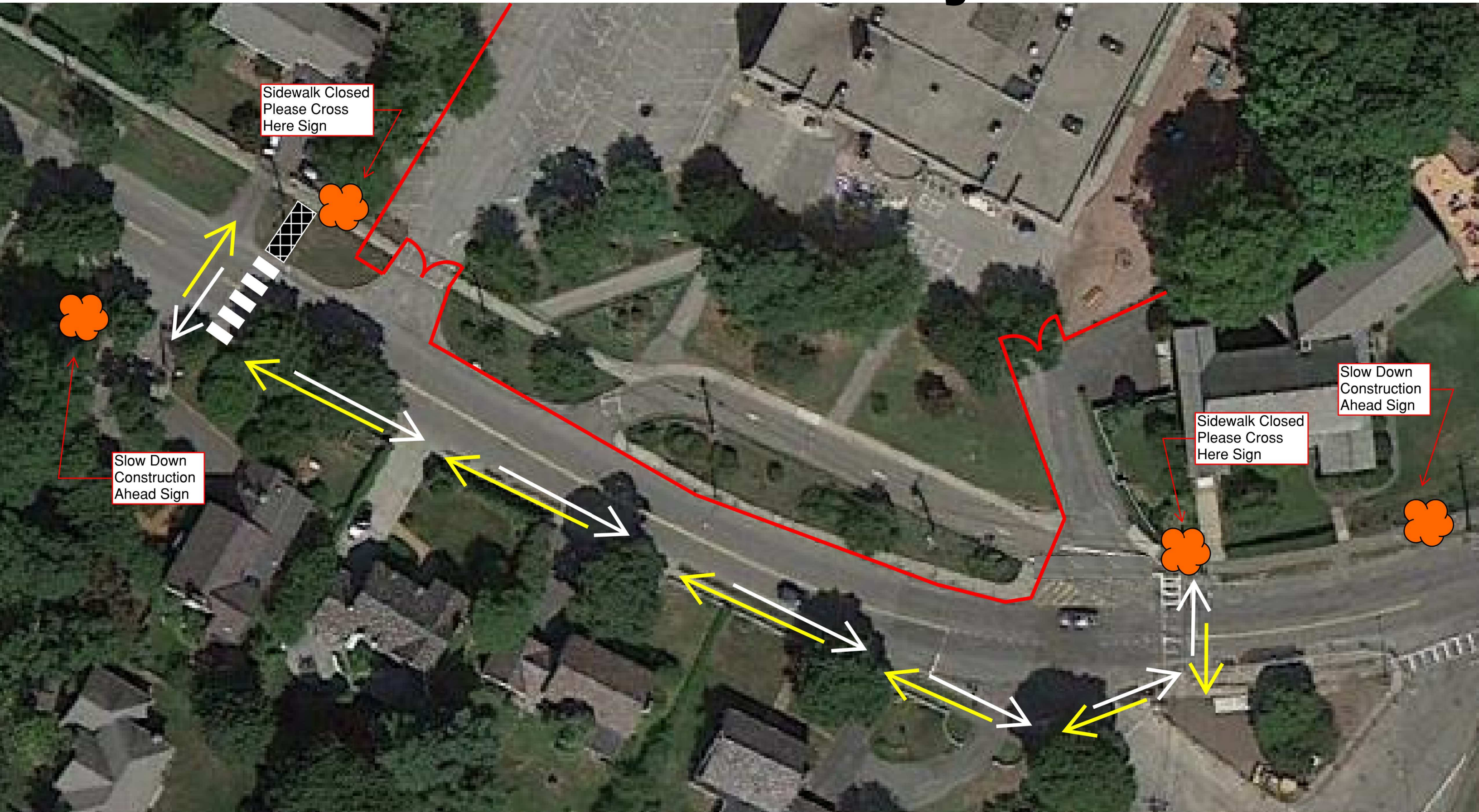
http://www.newtonma.gov/gov/building/angier_school/

Massachusetts School Building Authority



W.T. RICH COMPANY, INC.

Pedestrian Walkway Plan



Angier Elementary School